

1 & 2 BED PLANS BOOK

 **CASAVIVA**
BY LODHA

More time for life

DEVELOPMENT PLAN - 1 BED

LEGEND

- 1. DROP OFF
- 2. ENTRANCE LOBBY
- 3. KIDS' PLAY AREA
- 4. OUTDOOR KIDS' PLAY AREA
- 5. LIFT LOBBY
- 6. SERVICES
- 7. BASEMENT ENTRY / EXIT
- 8. PARKING COURT WITH TREES
- 9. LANDSCAPED SEATING AVENUE
- 10. SECURITY CABIN
- 11. SCREEN WITH SEATS
- 12. RETAIL
- 13. RETAIL PLAZA



AMENITY FLOOR PLAN - 1 BED

LEGEND

- | | |
|-------------------------------|---|
| 1. INDOOR GAMES | 6. PERIPHERAL SCREEN WITH FRAGRANT CLIMBERS |
| 2. GYMNASIUM | 7. MULTIPURPOSE PLAY TURF |
| 3. PARTY HALL | 8. ELDERS' SIT-OUT |
| 4. PARTY HALL SPILL OVER DECK | 9. WAY TO PLAY TURF |
| 5. JOGGING TRACK | 10. TOWARDS RESIDENCES |



TYPICAL FLOOR PLAN - 1 BED



UNIT PLAN - 1 BED



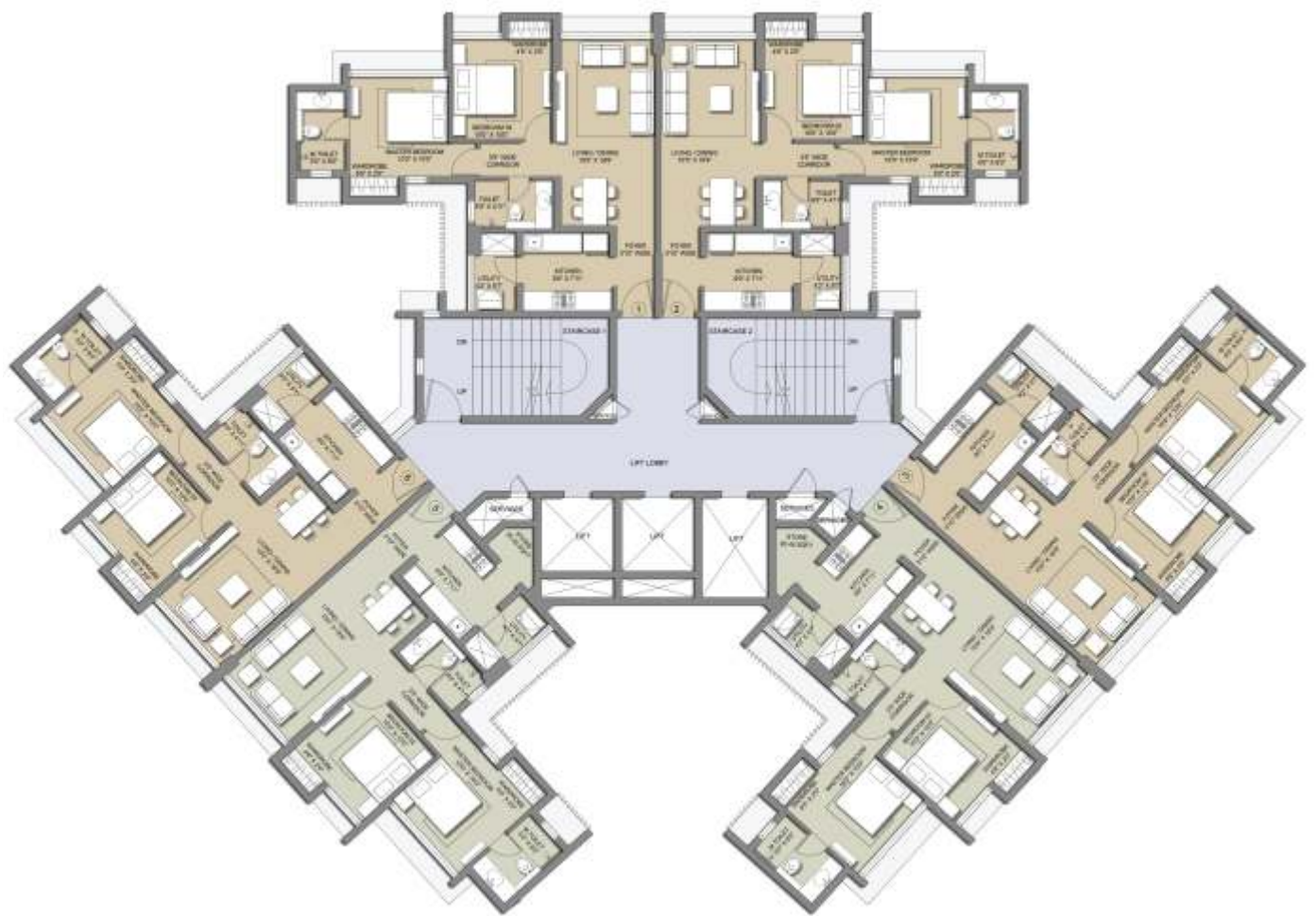
DEVELOPMENT PLAN - 2 BED

LEGEND

- 1. ARRIVAL COURT
- 2. TEMPLE COURT
- 3. MULTIPURPOSE LAWN
- 4. KIDS' PLAY COURT
- 5. TRELLIS WITH SEATING
- 6. JOGGING TRACK
- 7. ELDERS' SIT - OUT
- 8. TODDLERS' PLAY COURT
- 9. OUTDOOR PLAY COURT
- 10. PLANTER EDGE ALONG PARKING
- 11. SCREEN WITH CLIMBERS
- 12. DROP OFF CANOPY
- 13. PERIPHERAL PEDESTRIAN WALKWAY
- 14. INDOOR GAMES
- 15. GYMNASIUM
- 16. KIDS PLAY AREA
- 17. PARTY HALL
- 18. ENTRY / EXIT TO BASEMENT
- 19. SECURITY CABIN
- 20. SWIMMING POOL - FUTURE PART OF DEVELOPMENT



TYPICAL FLOOR PLAN - 2 BED



UNIT PLAN - 2 BED



UNIT PLAN - 2 BED WITH STORE



Disclaimer: The plans, layouts, specifications, images and other details herein are indicative and the developer/owner reserves the right to change any or all of these in the interest of the development. Select fittings/options may be available in limited units only or available at additional price and are not part of the standard unit. All brands mentioned herein may be replaced by equivalent or better brand(s) as decided by the project architect. The printed material does not constitute an offer and / or contract of any type between the developer / owner and the recipient; any sales / lease of any unit in this development shall be solely governed by the terms of the agreement for sale / lease entered into between the parties and no details mentioned in this printed material shall in any way govern such transaction. The dimensions and/or areas stated in the plans are measured on basis of unfinished surfaces using polyline method and do not reflect the reduction in dimensions on account of the finishes being installed. Further, variance of +/-3% in the unit carpet area and/or unfinished dimensions is possible due to design and construction variances. The project has been registered via MahaRERA registration number: P51700013263 / P51700013789 available at website: <http://maharera.mahaonline.gov.in> | Date of Printing: 04/18